



AI-526 / AI-526P ARTIFICIAL INTELLIGENCE TEMPERATURE CONTROLLER

Operation Instruction
Ver. 9.3



1.SUMMARY	1
1.1 Main Features	1
1.2 Ordering Code Definition	2
1.3 Modules	3
1.3.1 Slots of modules	3
1.3.2 Commonly used modules:	4
1.3.3 Installation and replacement of modules	4
1.3.4 Electric isolation of the modules	4
1.3.5 Further descriptions about module applications	5
1.4 Technical Specification	5
1.5 Wiring Diagram	6
2.DISPLAYS AND OPERATIONS	12
2.1 Front Panel Description	12
2.2 D71/E71 Rail mount Panel Description	14
2.3 Show Status	14
2.4 Operation method	14
2.4.1 Parameter Setting	14
2.4.2 Short-cut operation	14
3.PARAMETERS AND SETTINGS	15
3.1 Parameter Lock (Loc) and Field Parameters	15
3.2 The Parameter Table	15
3.3 Additional Explanation on Special Functions	24
3.3.1 Single-phase phase-shift trigger output	24
3.3.2 Alarm blocking at the beginning of power on	24
3.3.3 Setpoints switch	25
3.3.4 Communication function	25
3.3.5 Temperature re-transmitter / Program generator / Manual current output	25
3.3.6 Custom Input Specifications	25
3.3.7 Multiple Segmented Linear Correction of Input Signal	26
3.3.8 Non-linear Power Control of High Temperature Furnace	26
4. PROGRAM CONTROL (AI-526P ONLY)	27
4.1 Functions and Concepts	27
4.2. Program Arrangement	28
4.2.1 Ramp Mode	28
4.2.2 Soak Mode	29
4.2.3 Time setting	29
4.2.4 Set Point Setting	30
4.2.5 Program arrangement of multi-curve operation	30
5 FAQs	31
5.1 How to set self-tuning?	31
5.2 How to enter the internal parameter list?	31
5.3 How to judge whether the instrument has output?	31
5.4 Panel Flashes or AL?	31
5.5 How to enter the segment settings?	31
5.6 How to set alarm parameters?	31
5.7 How to set bidirectional output for heating and cooling?	31

1.SUMMARY

1.1 Main Features

- Accurate digital calibration technology for input measurement. Wide range of thermocouples and RTD are supported. Maximum resolution is 0.01°C.
- Advanced artificial intelligent control algorithm to avoid overshoot. Auto tuning (AT) is provided.
- Innovative modular structure enables abundant output options to adapt different applications. Quick production lead time and convenience in maintenance are benefited.
- User-friendly operation user interface.
- Customization on operation authorization and interface, as if it is tailor-made.
- Universal power supply 100-240VAC or 24VDC is possible. Different installation dimensions are available.
- Anti-interference ability complies with requirement of electromagnetic compatibility under adverse industrial environment.

Precautions

This manual introduces the V9.2 AI-526/526P Artificial Intelligence PID Temperature Controller. Some of the features mentioned in this manual may not be applicable to other versions of the instrument. The model and software version number of the instrument will be shown on the display during startup. Users should be aware of the differences between different models and versions when operating the device. Please read this manual carefully to ensure the proper use of the instrument and fully utilize its functionalities.

Before use, the AI instrument must be configured correctly according to their input/output specifications and functional requirements. The instrument can only be put into operation after the parameters have been properly set.

1.2 Ordering Code Definition

Advanced modularized hardware design is utilized for AI series instruments. There are maximum 5 module slots: multi-function input/output (MIO), main output (OUTP), alarm (ALM), auxiliary output (AUX) and communication (COMM). The modules can be purchased together or individual, and can be assembled freely. The input type can be set to thermocouple, RTD, or linear current/voltage.

The ordering code of AI-526/AI-526P series instrument is made up of 9 parts. For example:

AI-526 A N X3 L3 N S4 - 24VDC - (F2)
 ① ② ③ ④ ⑤ ⑥ ⑦ ⑧ ⑨

It shows that the model of this instrument is AI-526, front panel dimension is A size(96 × 96mm), no module is installed in MIO slot, X3 linear current output module is installed in OUTP (main output), ALM (alarm) is L5 (dual relay contact output module), no module is installed in AUX (auxiliary output), S4 (RS485 communication interface module) is installed at COMM, and the power supply of the instrument is 24VDC, an extended input type (F2 radiation type pyrometer) is available

The following is the meanings of the 9 parts:

- ① Instrument Model
 AI-526 Economical temperature controller with measurement accuracy 0.25%F.S, with artificial intelligent controlling technology, various types of alarm, retransmission and communication.
 AI-526P On top of AI-526, providing 30 segments of time-procedure programmable function.
- ② Panel Dimension

	Panel Code	Dimension Width x Height (mm)	Depth behind mount (mm)	Opening Dimension Width x Height (mm)	Light Bar
Standard Depth	A	96 x 96	100	92 ^{+0.5} ×92 ^{+0.50}	---
	A2				25 segments in 4 levels of luminosity at 1% resolution
	B	160 x 80	100	152 ^{+0.5} ×76 ^{+0.5}	---
	B2				25 segments in 4 levels of luminosity at 1% resolution
	C	80 x 160	100	76 ^{+0.5} ×152 ^{+0.5}	---
	C3				50 segments in 2 levels of luminosity at 1% resolution
	E	48 x 96	100	45 ^{+0.5} ×92 ^{+0.5}	---
	E2				25 segments in 4 levels of luminosity at 1% resolution
	F	96 x 48	100	92 ^{+0.5} ×45 ^{+0.5}	---
	D	72 x 72	95	68 ^{+0.5} ×68 ^{+0.5}	---
D2	48 x 48	95	45 ^{+0.5} ×45 ^{+0.5}	---	
D6	48 x 48	95	46 ^{+0.5} ×46 ^{+0.5}	---	
Short Depth	A1	96 x 96	70	92 ^{+0.5} ×92 ^{+0.50}	---
	A21				25 segments in 4 levels of luminosity at 1% resolution
	B1	160 x 80	70	152 ^{+0.5} ×76 ^{+0.5}	---
	B21				25 segments in 4 levels of luminosity at 1% resolution
	C1	80 x 160	70	76 ^{+0.5} ×152 ^{+0.5}	---
	C31				50 segments in 2 levels of luminosity at 1% resolution
	D1	48×48	80	45 ^{+0.5} ×45 ^{+0.5}	---
	D61	48×48	80	46 ^{+0.5} ×46 ^{+0.5}	---
	E1	48 x 96	70	45 ^{+0.5} ×92 ^{+0.5}	---
	E21				25 segments in 4 levels of luminosity at 1% resolution
F1	96 x 48	70	92 ^{+0.5} ×45 ^{+0.5}	---	
Dail Mount	D5	22.5 x 100	112	DIN rail mount. Optional external E8 keypad is required to be plugged for parameter setting and operation.	
	D71	22.5 x 100	112	Power and communication wiring method are grouped in hot-plugged terminals. Others specification are the same as E7.	
	E7	22.5 x 100	112	DIN rail mount. Specially designed compact dual LED display with operation buttons.	
	E5	48 x 96	100	DIN rail mount. Optional external E8 keypad is required to be plugged for parameter setting and operation.	

- ③ **Module available in multiple functions I/O (MIO):** I2, I44, K3, V, etc. N denotes that there is no module installed. Same as below.
- ④ **Module available in main output (OUTP):** L1, L2, L4, W1, W2, G, K1, K3, X3, X56, etc.
- ⑤ **Module available in alarm (ALM):** L2, L21, L3, L4, W1, W2, G, etc.
- ⑥ **Module available for auxiliary output (AUX):** L1, L2, L21, L3, L4, W1, W2, G, K1, X3, X5, X56 etc.
- ⑦ **Module available for communication (COMM):** S, S4, V, etc.
- ⑧ **Power supply of the instrument:** If it is left blank, the power of the instrument is 100~240VAC. "24VDC" means the power supply of 20~32V DC power (required to be specified upon ordering).
- ⑨ **Extended graduation specification:** (If there is none, leave it blank). AI-526 series instruments input is already universal supporting common thermocouples, RTDs, linear voltage, current and resistance inputs (Please refer to the latter part of technical specification). If it is required, an additional specification can be extended.

Note 1: The instrument applies the technology of automatic zero and digital calibration, and is free of maintenance. If the error exceeds certain range, cleaning and drying of the inside parts will improve. If it is not, please send the instrument back to the factory to examine and repair.

Note 2: Please specify the error phenomenon and reason to ensure proper and complete repair if it is sent back for repair.

1.3 Modules

1.3.1 Slots of modules

AI-526/526P supports maximum 5 function module slots (Panel size D, short-depth panel size A1 and A21 support 3 slots which are OUTP, AUX and COMM/AL1; D2/D6 support 2 slots which are OUTP and COMM/AUX; D5/D7/E7 support 1 slot; D1 supports on-board soldered module instead of removable modules. Different modules installed will provide different functions and output types.

- **Multiple function Input / Output (MIO):**
By installing I44 module with 24VDC loop power, the instrument reads input signal from 2-wire transmitter or 4-20mA signal. If a I2 (on-off signal input) module is installed, the instrument can switch between set points SV1 and SV2 by an external switch. On top of that, installing K3 module will provide three-phase thyristor zero-crossing triggering output.
- **Main output (OUTP):**
As control output such as on-off control, standard PID control, and AI PID control. It can also be used as retransmission output of process value (PV) or set point (SV). Installing L1 or L4 modular will provide relay contact output. Installing X3 or X5 module will provide 0-20mA/4-20mA/0-10mA linear current output. Installing G module will provide SSR voltage output. Installing W1 or W2 module will provide TRIAC no contact switch output.
- **Alarm (ALM):**
Installing L2 or L21 will provide 1 normally open + normally close relay output (AL1). Installing L3 module will provide 2 normally open relay outputs (AL1+AL2).
- **Auxiliary output (AUX):**
In a heating/refrigerating dual output system, module X3, X5, L1, L4, G, W1, W2, etc can be installed for the second control output. In a system which does not require second output, installing L2, L21 or L3 relay module can work as alarm. Installing R module (RS232C interface) will provide communication feature with computer.
- **Communication Interface (COMM):** Installing module S or S4 (RS485 communication interface) provides communication feature with computer. Installing voltage output module will provide power supply for external sensor or transmitter.

1.3.2 Commonly used modules:

- N** (Or left blank) No module installed.
- L0** Large capacity and large size relay. Normally open(NO) + normally close(NC) relay output module.(Capacity: 30VDC/2A, 250VAC/2A, suitable for alarm).
- L1** Large capacity and large size relay. NO relay output module. (Capacity: 30VDC/2A, 250VAC/2A).
- L2** Small capacity and small size relay. NO+NC relay output module. (Capacity: 30VDC/1A, 250VAC/1A, suitable for alarm).
- L3** Dual channel, large capacity and large size relay. NO relay output module. (Capacity: 30VDC/2A, 250VAC/2A).
- L4** Large capacity but small size relay. NO+NC relay output module. (Capacity: 30VDC/2A, 250VAC/2A).
- W1/W2** TRIAC no contact NO (W2 is NC) discrete output module (Capacity: 100~240VAC/0.2A, burn-proof)
- G** Solid-state relay (SSR) voltage output module (12VDC/30mA).
- G5** Dual SSR voltage output module.
- K1/K3** Single channel/3-channel thyristor zero-crossing trigger output module (Each channel triggers one loop of a TRIAC or a pair of inverse parallel SCR with current of 5~500A).
- K50/K60** Single channel 220VAC/380VAC thyristor phase-shift trigger output module (Each channel triggers one loop of TRIAC or a pair of inverse parallel SCR with current of 5~500A). Only 50Hz power is allowed.
- X3** Photoelectric programmable linear current output module.
- X5** Photoelectric programmable linear current output module with own photoelectric isolated power supply.
- X56** Opto-isolated programmable linear current output module with built-in isolation power supply (X56 is a soldered module).
- S** Photoelectric RS485 communication interface module.
- S1** Photoelectric RS485 communication interface module. (Uses internal 24V isolated power)
- S2** Opto-isolated RS485 communication interface module (applicable to D and D71 sizes)
- S4** Photoelectric RS485 communication interface module with own photoelectric isolated power supply.
- R** Photoelectric RS232C communication interface module.
- V24/V12/V10** Isolated 24V/12V/10V DC voltage output with maximum current of 50mA for power supply of external transmitter or circuit.
- I2** Switch / frequency signal input interface for external switch or frequency signal, with 12VDC power supply for external sensor.
- I44** **Analog 4~20mA/0~20mA input interface, with 24VDC/25mA power output for two-wire transmitters.**

1.3.3 Installation and replacement of modules

Module installation and corresponding parameter setting is done by factory. If there is faulty modules to be replaced or functions to be changed, users can replace by themselves. Users can pull the controller board out of the housing, using a small flat-tip screwdriver to insert into the opening between the original module and the slot, removing the existing module and replacing a new one. Changing a module type often require users to modify the corresponding parameters.

1.3.4 Electric isolation of the modules

There are a group of 24V and a group 12V power supply built in the instrument and isolated to the main circuit. The 24V power commonly supplies voltage output module, such as V24/V12/V10 (24V/12V/10V voltage output), I2 (frequency/on-off input, with 12V isolated voltage output) and I44, etc. The 12V power commonly supplies power for output or communication module. Generally, the relay contact output and TRIAC no contact discrete output are self-isolated from the other circuit or does not require isolated power. Therefore, only the electric isolation between the communication interface and the current output should be considered. S (RS485 communication interface), R (RS232 communication interface) and X3 (linear current output) all draws from the internal 12V power supply. If more than one of the above modules are installed, they will be not electrically isolated because they share the same power supply. To avoid interference, S4 (RS485 communication interface) or X5 (linear current output) is designed. They have their own isolated power supply, without drawing from instrument internal power. For example, if an X3 module is installed in main output (OUTP) slot, S4 or X5 should be installed in communication (COMM) slot. For relay contact point and thyristor no contact point output, they are isolated from other circuits already. Isolation for

SSR voltage output (G) generally is not required because solid –state relay itself is isolated.

1.3.5 Further descriptions about module applications

- **Voltage output module:** The voltage output modules like V24, V12, V10 are often used for supplying power for external transducer or feedback resistance of transmitter. These modules can be installed in any slot. To standardize the wiring, it is recommended to be installed in the first idle slot in the order of MIO, AUX, and COMM.
- **No contact switch module:** W1/W2 are newly developed non-contact switch module with advanced “burn proof” technology and zero-crossing conduction. It can replace the relay contact switch to control AC contactor actuator or electric servo motor. Compared to the relay contact output module, W1/W2 have longer life span and able to lower the interference spark. This improves the stability and reliability of the system. Since the driving component is thyristor, it is suitable to control 100~240VAC but no DC. Since output terminals are connected in series with protection components, the allowed continuous current for control is up to 0.2A with allowed maximum instantaneous current up to 2A. This driving power can directly control AC contactor of 220VAC with current below 80A. For the load larger than 80A, an intermediate relay is needed.
- **Relay switch module:** The relay modules are widely used in industrial control. However, they are the only modules with life time limit and size limit and also bringing large amount of electromagnetic interference. It is important to choose a suitable relay module. To control equipment with 100~220VAC supply, such as AC contactor and electromagnetic valve, W1 module is recommended. To control DC or AC above 50VAC, relay module L1, L4, etc can only be chosen. L2 module is small without size limitation and both of its normal open and normal close terminals have varistor spark absorption. But the capacity is small therefore it is suitable for alarm output. L1 and L3 are larger in size and higher in capacity. In the 48mm dimension instrument (for example, D2, E, F, E5, etc), either main board or side board can be installed. Otherwise the modules will collide to one another. If either main or side board is L1 or L3 installed, another board cannot have L1 or L3 installed at the same time. L3 module provides dual relay outputs. It can be used to support two loops of alarm, for example, AL1+AL2. If mechanical switch is not preferred, G5 (dual SSR voltage driver) with external solid-state relay (SSR) can be used to drive the load instead.

1.4 Technical Specification

- **Input Specification: (One instrument is compatible to the following)**
 - Thermocouple: K, S, R, E, J, T, B, N, WRe3-WRe25, WRe5-WRe26, etc
 - Resistance temperature detector: Cu50, Pt100
 - Linear voltage: 0~5V, 1~5V, 0~1V, 0~100mV, 0~20mV, 0~500mV etc.
 - Linear current (external current divider required): 0~10mA, 0~20mA, 4~20mA, etc.
 - Extended specification: Apart from the above-mentioned Input specification, an additional type can be provided upon request. (Graduation index may be required to provide by customer)
- **Instrument Input range**
 - K(-200~1300℃), S(-50~1700℃), R(-50~1700℃), T(-200~+350℃), E(0~800℃), J(0~1000℃), B(200~1800℃), N(0~1300℃),
 - Cu50(-50~+150℃), Pt100(-200~+600℃)
 - Linear Input: -9990~30000 defined by user
- **Measurement accuracy** : 0.25%FS ± 1 measurement unit
- **Control period** : 0.24~300.0 seconds selectable, and it should be integer times of 0.5 second.
- **Regulation mode:**
 - On-off control mode (dead band adjustable)
 - AI-PID with fuzzy logic PID regulating and auto tuning with advanced artificial intelligence algorithm.
- **Output specification (Modularized)**
 - Relay output (NO+NC):** 250VAC/1A or 30VDC/1A
 - TRIAC no contact discrete output (NO or NC):** 100~240VAC/0.2A (continuous), 2A (20mS instantaneous),

repeat period \geq 5s)

SSR Voltage output: 12VDC/30mA (To drive solid-state relay SSR).

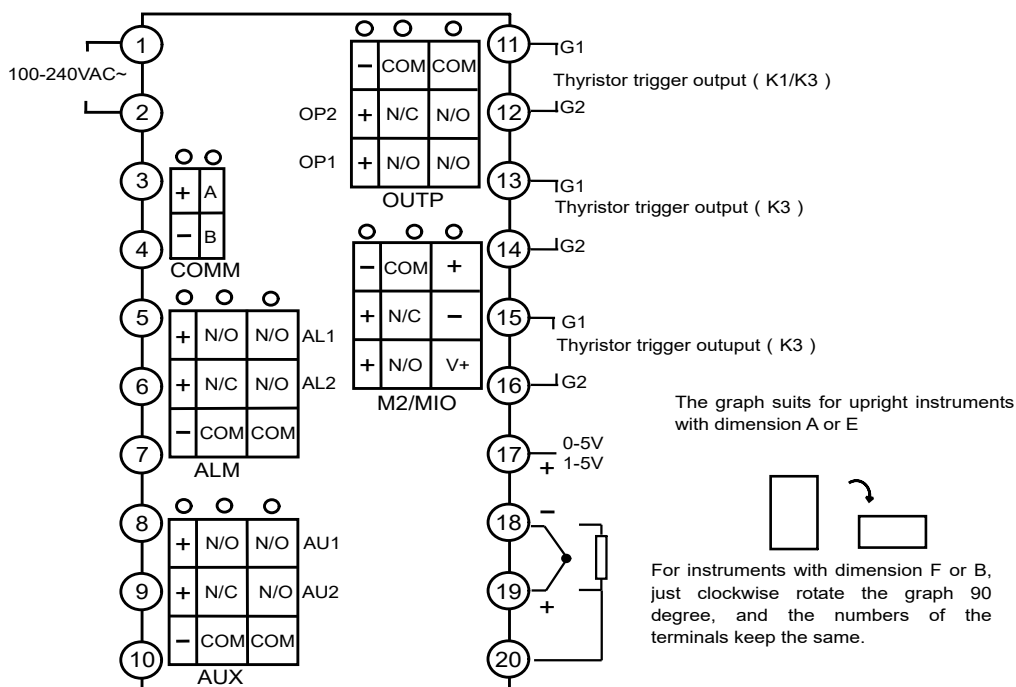
Thyristor zero-crossing trigger output: To trigger TRIAC of 5~500A, a pair of inverse paralleled SCRs or SCR power module.

Linear current output: 0~10mA or 4~20mA customized. (X3 module installed, output voltage \geq 10.5V. X5 module installed, output voltage \geq 7V)

- **Alarm function:** 4 types of alarm, high limit, low limit, deviation high limit and deviation low limit with alarm blocking at the beginning of power on.
- **Electromagnetic compatibility (EMC):** \pm 4KV/5KHz according to IEC61000-4-4 (Electrical Fast Transient); 4KV according to IEC61000-4-5 (Electrical Surge).
- **Isolation withstanding voltage:** Among power, relay contact or signal terminals \geq 2300VDC. Among isolated electroweak terminals \geq 600V
- **Power supply:** 100~240VAC, -15%, +10% / 50~60Hz; 120~240VDC; or 24VDC, -15%, +10%.
- **Power consumption:** \leq 5W
- **Operating ambient:** Temperature -10~60 $^{\circ}$ C. Humidity \leq 90%RH
- **Front panel dimension:** 96 \times 96mm, 160 \times 80mm, 80 \times 160mm, 48 \times 96mm, 96 \times 48mm, 48 \times 48mm, 72 \times 72mm
- **Panel cutout dimension:** 92 \times 92mm, 152 \times 76mm, 76 \times 152mm, 45 \times 92mm, 92 \times 45mm, 45 \times 45mm, 68 \times 68mm
- **Depth behind mounting surface:** \leq 100mm

1.5 Wiring Diagram

Wiring diagram of rear terminals



Note: ① For linear voltage ranges below 100mV, use terminals 19 and 18 for input; for 0~5V and 1~5V signals, use terminals 17 and 18 for input.

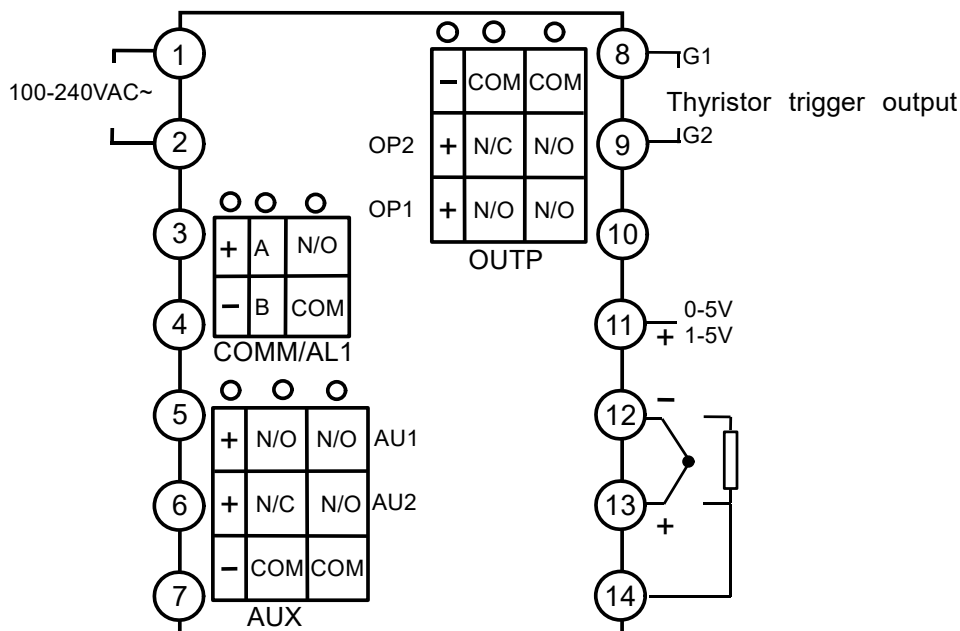
② For 4~20mA linear current input, the signal can be converted to a 1~5V voltage signal using a 250 Ω resistor and then input via terminals 17 and 18. Alternatively, the I44 module can be installed at the MIO position to input via terminals 14+ and 15 -, or a two-wire transmitter can be directly connected to terminals 16+ and 14 -.

③ Different thermocouple types require different thermocouple compensation wires. When using the internal automatic compensation mode, the compensation wire must be directly connected to the instrument's rear terminal block. It must not be switched to ordinary wires in between, otherwise measurement errors will occur.

④ When the main output is current or single-channel SSR voltage output, it is delivered via terminals 13+ and 11-.

⑤ When installing single-channel relay modules such as L1 or L21, OP1, AL1, and AU1 are normally open contacts, while OP2, AL2, and AU2 are normally closed contacts.

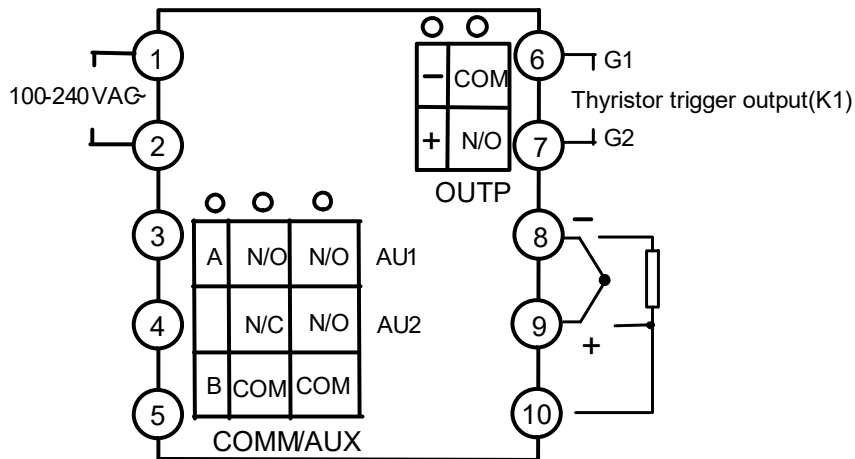
Wiring diagram of dimension D (72×72mm)



Note 1: Linear voltage signal of range below 500mV should be inputted from terminals 13 and 12, and signal of 0~5V and 1~5V should be inputted from terminals 11 and 12.

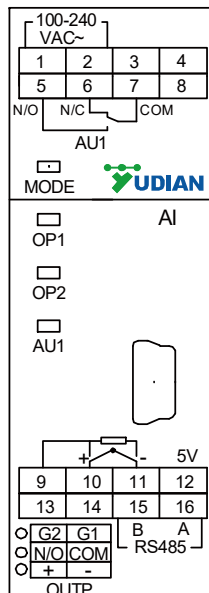
Note 2: 4~20mA linear current signal can be converted to 1~5V voltage signal by connecting a 250 ohm resistor and inputted from terminals 11 and 12.

Note 3: S or S4 module can be installed in COMM slot for communication. If relay, TRIAC no contact switch, or SSR drive voltage output module is installed in COMM, it can be used as alarm output. If I2 module is installed in COMM and parameter "bAud" is set to 1, SV1 and SV2 can be switching by connecting a switch between terminals 3 and 4.

Wiring diagram of dimension D2 (48x48mm)


Note 1: Note 1: For 4~20mA input (please specify J4 input), connect to terminals 11+ and 10-.

Note 2: When a S or S4 communication interface module is installed at the COMM/AUX terminal, it is used for communication (COMM). When an L2 relay is installed, it is used for AU1 alarm output. When an L3 dual relay output module is installed and the bAud parameter is set to 0, it can be used for AU1 and AU2 alarm outputs; if bAud=2, it can be used for AU1 and AL1 alarm outputs. Alternatively, install modules such as L1, L2, L4, G, K1, W1, W2, etc., for auxiliary output in bidirectional control. When an I2/I5 module is installed and parameter bAud is set to 1, the terminals can emulate the MIO module's digital input function, with wiring connected to terminals 3 and 5.

Wiring diagram of dimension D5


Note: Dimension D5 instruments are fixed with one loop of alarm and communication feature. Available main output module are G, X5, L2, K1, K50, K60 and W1.

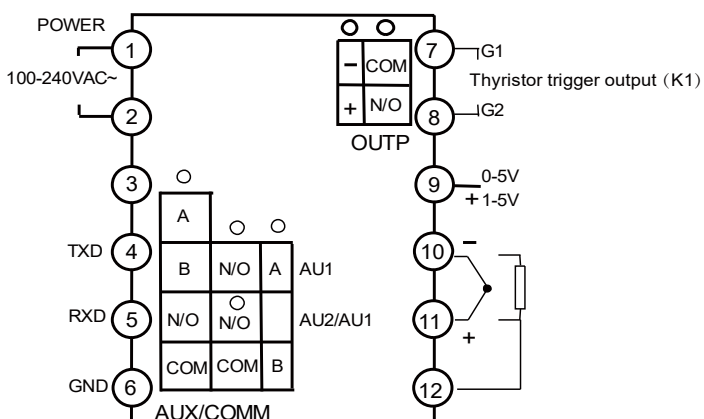
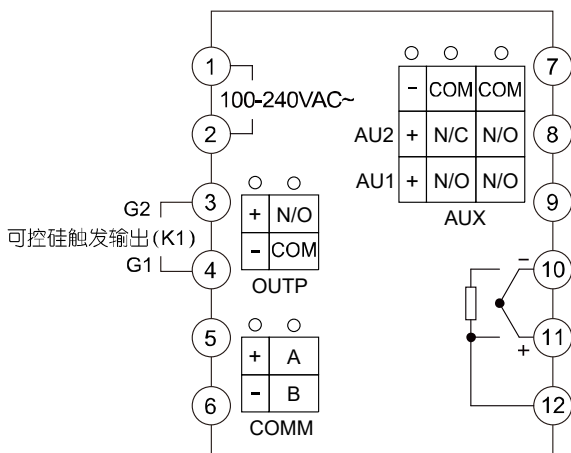
Wiring diagram of dimension D6 (48×48mm)

Note 1: Linear voltage 0~5V or 1~5V input from 9+ and 10-

Note 2: 500mV or below input from 11+ and 10-

Note 3: External precise resistor 250ohm can be paralleled shunt to convert 4~20mA to 1~5V then input from 9+ and 10-

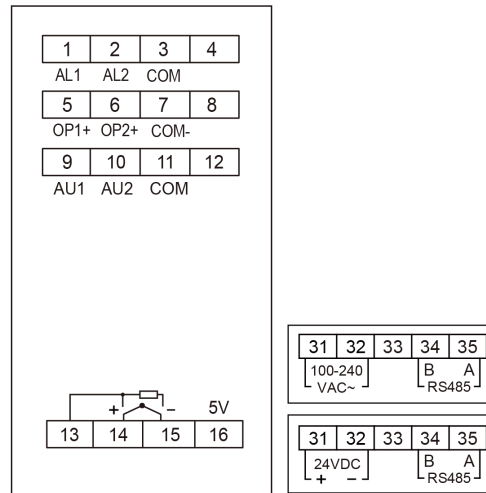
Note 4: In COMM/AUX slot, installing L3 dual relay module provides two alarms while installing SL module provides RS485 communication and one alarm.


Wiring diagram of dimension D61 (48×48mm)


Note 1: Note 1: For 4~20mA input (please specify J4 input), connect to terminals 11+ and 10-.

Note 2: For linear voltage ranges of 0~100mV or below, signals should be input via terminals 11+ and 10-.

Note 3: When a communication module S is installed at the COMM position, the terminals are used for RS485 communication. When an I2 module is installed and the bAud parameter is set to 1, the terminals can emulate the MIO module's digital input function. An external switch connected to terminals 5 and 6 can then be used for SP1/SP2 switching or for controlling functions such as program run/stop.

Wiring diagram of dimension D71 (22.5 x 100mm)

Note 1:

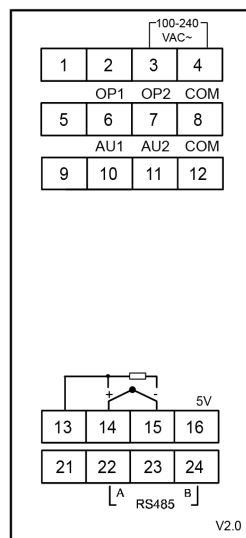
For 0-5V/1-5V input, connect to terminals 15 - and 16+. For inputs below 100mV, connect to terminals 14+ and 15 -. For 4-20mA linear current input, convert to 1 -5V using a 250Ω resistor, then connect to terminals 15 - and 16+.

Note 2:

The main output module can be selected from G, X3, L2, K1, K50, K60, or W1.

Note 3:

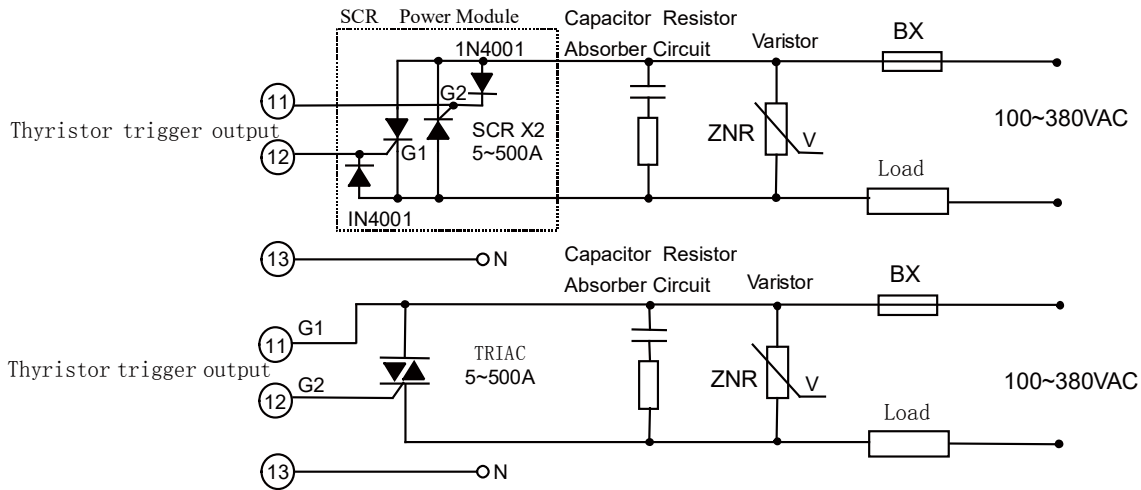
This is the new D71 wiring diagram. If the wiring diagram label on the actual device differs from this, please contact the Technical Department for consultation.

Wiring diagram of E7 size instruments (22.5 x 100mm)


Note 1: 0~5V/1~5V input from 16+, 15-, below 100mV input from 14+, 15-, a 250 ohm resistor needs to be connected to change 4~20mA linear current to 1-5V and then input from 16+, 15-.

Note 2:

Modules G, X3, L2, K1, K50, K60, W1 can be selected for the main output .



Note 1: According to the voltage and current of load, choose a suitable varistor to protect the thyristor. A resistor-capacitor circuit (RC circuit) is needed for inductance load or phase-shift trigger output.

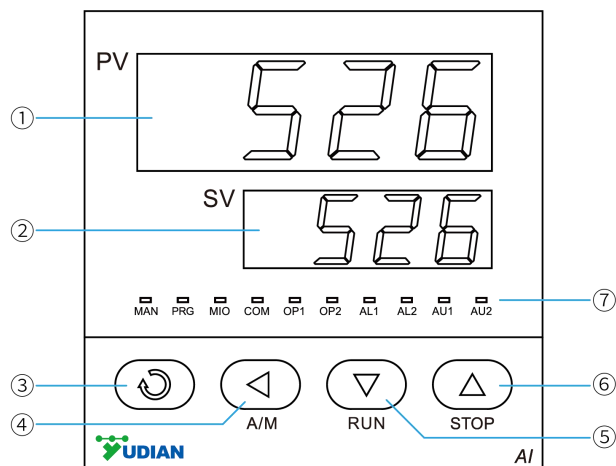
Note 2: SCR power module is recommended. A power module includes two SCRs, is similar to the above dashed square.

Note 3: The load voltage is 380V when K60 is installed. The load voltage is narrowed down to 200~240V when K50 is installed.

Note 4: When three-phase three-wire electric furnace is used and the service time exceeds zero trigger control, only two two-channel SCR is required to effectively control the instrument, which not only reduces the cost but also saves about 0.2% of the power (for three-phase three-channel SCR, about 0.6% of the power consumption is on thyristor). If three-channel thyristor is used for full control without connecting to the neutral line, the instantaneous trigger will be disabled to completely cross zero, which will impact the power grid and trigger module. If the purpose that the furnace wire is not electrified when the thyristor stops triggering is expected, it is recommended to add a leakage switch. If three-channel thyristor is used to fully control, it is recommended to add a zero line to the furnace.

2.DISPLAYS AND OPERATIONS

2.1 Front Panel Description



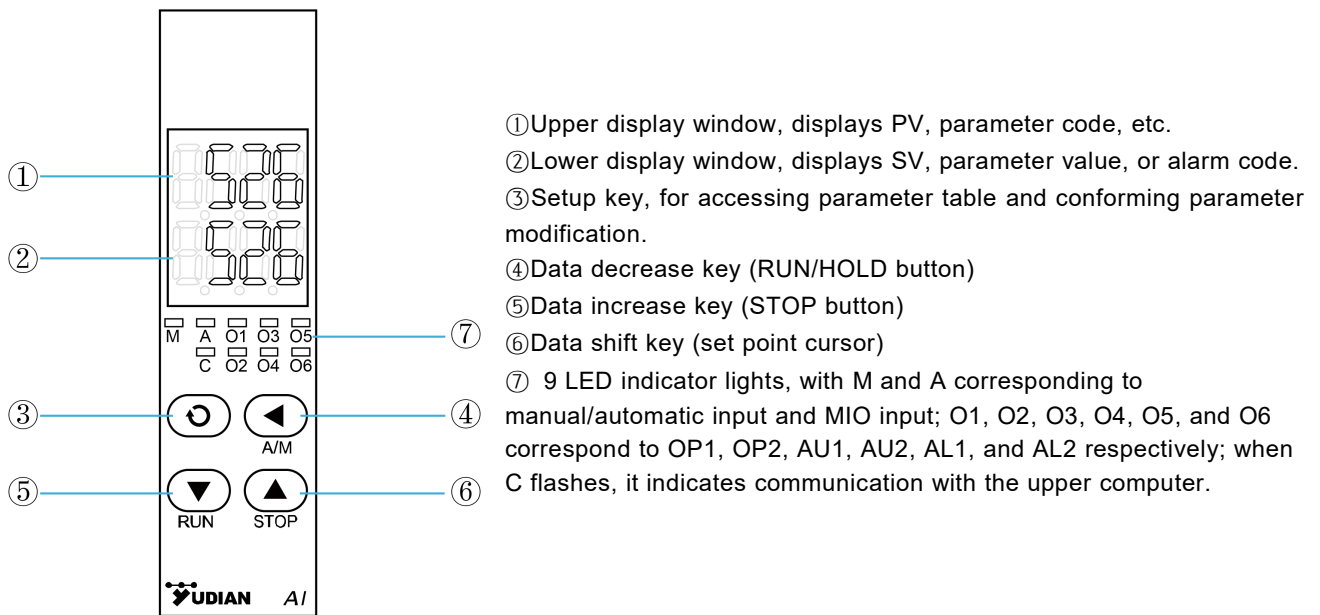
- ① Upper display window: Displays PV, parameter code, etc.
- ② Lower display window: Displays SV, parameter value, or alarm message
- ③ Setup key: For accessing parameter table and conforming parameter modification.
- ④ Data shift key(cursor pointer)
- ⑤ Data decrease key(RUN/HOLD button)
- ⑥ Data increase key (STOP button)
- ⑦ 10 LED indicators. MAN is not applicable in this series. PRG turns on when program is running. MIO, OP1, OP2, AL1, AL2, AU1 and AU2 turns on when the corresponding module are giving output. COMM turns on when the instrument is communicating with upper device.

Basic display status : When power is on, the upper display shows the process value (PV) and the lower display shows the set point (SV). At certain circumstances, the lower display blinks SV and the following status message. The symbol message.

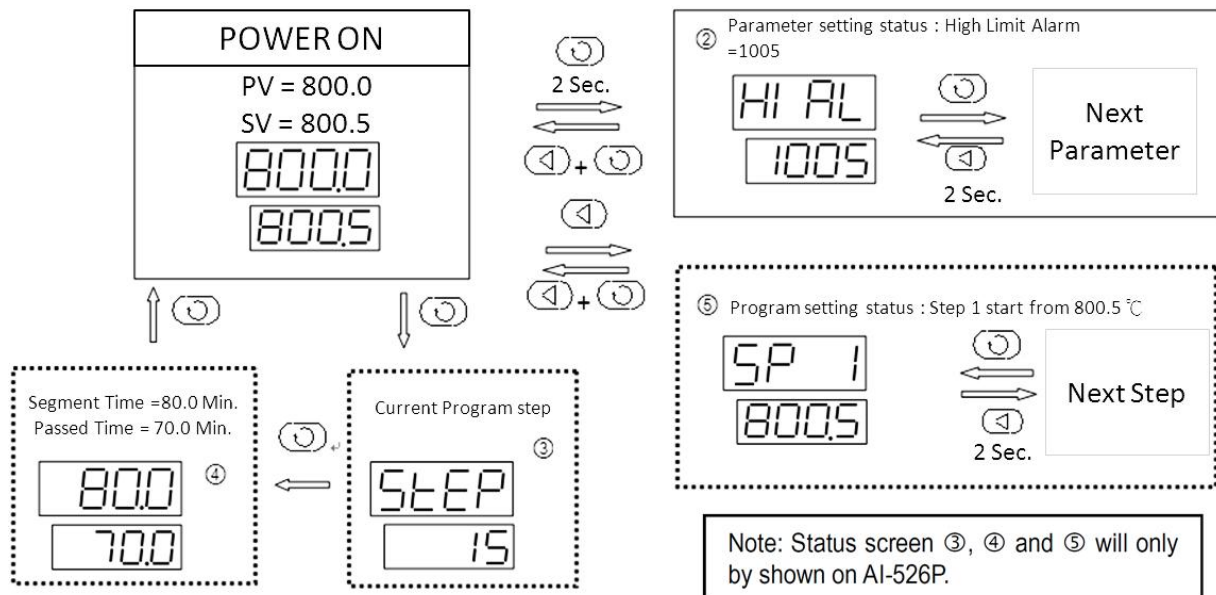
Symbol	Description
orAL	Input measurement value is out of range. The possible reasons are incorrect input specification, disconnected thermocouple or short circuited.
HIAL	High limit alarm
LoAL	Low limit alarm
HdAL	Deviation high alarm
LdAL	Deviation low alarm
StoP	Program is in stop status
Hold	Program is in hold status
rdy	Program is in ready status (Only available in AI-526P)

Note : The alarm message can be turned off by setting parameter AdIS to oFF.

2.2 D7/E7 Rail mount Panel Description






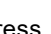
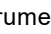





2.3 Show Status



2.4 Operation method





2.4.1 Parameter Setting



In basic display status, press  and hold for about 2 seconds can access Field Parameter Table. Press  can go to the next parameter; press ,  or  can modify a parameter. Press and hold  can return to the previous parameter. Press  (don't release) and then press  key simultaneously can escape from the parameter table. The instrument will escape automatically from the parameter table if no key is pressed within 25 seconds, and the change of the last parameter will not be saved.


In Field Parameter Table,  till the last field parameter Loc appears. Setting Loc=808 and then press  can access System Parameter Table.


2.4.2 Short-cut operation






All function in AI-526/526P can be accessed through changing parameters. For common operation such as set point editing, changing the status of program RUN/STOP/HOLD, short-cut key is provided. These short-cut can be prohibited to avoid any incorrect operation.

SET POINT EDIT: Press  to start to edit set point. Then press ,  or  to adjust SV value.

PROGRAM SEGMENT EDIT (AI-526P only): Press  once to enter program setting status. The set point of the current program StEP will be displayed. Press  to go to the next parameter and value. Every StEP is based on the sequence in "setpoint1- time1-setpoint2- time2, etc". Program StEP can modify anytime even the program still in running.

RUN program: Press and hold  key for about 2 seconds until the lower display window displays the "run" message. AI-526P will start the program from STOP status. If parameter "PAF.F =1" and program status is RUN, this operation will Hold the program. The timer will be paused. Perform RUN operation again will resume the program.

STOP program: Press and hold  key for about 2 seconds until the lower display window displays the "StOP" message. The instrument output will be stopped. AI-526P will stop the program and restore the current StEP number to 1.

Auto Tuning: Press  for 2 seconds, "At" parameter will appear. Press  to change the value of "At" from "oFF" to "on", then press  to activate the auto-tuning process. (If SP_r parameter is set to be effective and the instrument is at the limit of increasing rate, auto-tuning will be paused temporary.) During auto tuning, the lower display blinks with "At". After two fluctuating cycles by on-off control, the instrument will obtain the optimal PID control parameter value. If you want to quit from auto tuning, press and hold the  key for about 2 seconds until the "At" parameter appear again. Change "At" from "on" to "oFF", press  to confirm, then the auto tuning process will be cancelled. If the instrument is running the program, the program timer will be paused to avoid changing SV.

Note 1: The advanced artificial intelligence algorithm APID is able to avoid overshooting problem over standard PID algorithm and achieve precise control. Both APID and PID can be calculated based on auto-tuning.

Note 2: Different set point will result in different PID values from auto-tuning. Please input the set point to an value which is often used or mean value. For those ovens with good heat preservation, the set point can be set at the highest applicable temperature. Depending on the system, the auto-tuning time may vary from seconds to hours.

Note 3: Parameter CHYS (on-off differential, control hysteresis) has influence on the accuracy of auto-tuning. In general, the smaller the value of CHYS, the higher precision of auto-tuning will be. There is a chance that the CHYS value is too small so as to work as on-off control. Then the resulting PID values will be completely misled. CHYS=2.0 is recommended.

Note 4: AI series instrument has the function of self-adaptation. It will learn and refine the configuration. The outcome from at the first run after auto-tuning may not be perfect but it will come to the best after a period of usage.

3.PARAMETERS AND SETTINGS

3.1 Parameter Lock (Loc) and Field Parameters

The parameters table can be customized. Those parameters required to be edited are grouped as "Field Parameter". Field Parameter is a sub-table from the full parameter table. This sub-table can be defined by user. Access to full parameter table requires a password. Parameter lock (Loc) provides different operation privilege and access control to the parameter table. Loc = 0: Allowing changes to SET POINT and FIELD PARAMETER

Loc = 1: Allowing changes to SET POINT and forbidding changes to FIELD PARAMETER

Loc = 2~3: Forbidding changes to SET POINT and allowing changes to FIELD PARAMETER

Loc = 4~255: Forbidding any changes to parameters except Loc itself and all shortcuts.

Loc=PASd: Full access and editing privilege to complete parameter table apart from read-only parameters. PASd refers to master password, initially as 808. The password format is a number between 256~9999. This password cannot be restored nor reset. There are 8 field parameters can be defined by as EP1~EP8. If the quantity of the field parameters is less than 8, the first idle EP parameter should be set to "nonE". The initial values of EPs and Loc are EP1=HIAL, EP2=LoAL, EP3=HdAL, EP4=LdAL, EP5=nonE, EP6=nonE, EP7=nonE, EP8=nonE and Loc=0.

since version 9.1, Loc parameter has been enabled to restrict communication writing. For details, please refer to the description of communication protocol.

3.2The Parameter Table

The parameters can be divided to 8 groups including alarm, control, input, output, communication, system, set point/program step and field parameter:

Code	Name	Description	Setting Range
HIAL	High limit alarm	Alarm turns on when PV>HIAL Alarm turns off when PV<HIAL-AHYS, Set to the maximum value to disable the alarm. Alarm output location can be defined by parameter AOP. All alarms can be assigned to AL1, AL2, AU1, AU2 or none. More alarm allocation is explained in AOP section below.	-9990~ +32000 units
LoAL	Low limit alarm	Alarm turns on when PV<LoAL Alarm turns off when PV>LoAL+AHYS Set to the minimum value to disable the alarm. HIAL and LoAL can be assigned as deviation alarms. Details please refer to the description of parameter AF.	
HdAL	Deviation high alarm	Alarm turns on when PV-SV>HdAL; Alarm turns off when PV-SV<HdAL-AHYS Set to the maximum value to disable the alarm.	
LdAL	Deviation low alarm	Alarm turns on when PV-SV<LdAL Alarm turns off when PV-SV>LdAL+AHYS Set to the minimum value to disable the alarm. HdAL and LdAL can be assigned as absolute high limit and low limit alarms. Details please refer to the description of parameter AF.	
AHYS	Alarm hysteresis	Also known as dead band or lag. To avoid frequent alarm on-off action caused by the fluctuation of PV. Usage of AHYS is shown above.	0~2000 units

AdIS	Alarm display	<p>oFF : No alarm message shown in the lower display even there is an alarm</p> <p>on : Alternately showing alarm message and value in the lower display when there is an alarm</p> <p>FOFF, Energy-saving/Confidential display mode. In this mode, the instrument will turn off the display of measurement and setpoint values, helping to save power or maintain confidentiality of process temperatures. The lower display will show the current station number, and the alarm symbol will appear when an alarm occurs.</p>	oFF / on																														
AOP	Alarm output allocation	<table border="1" data-bbox="421 528 1305 801"> <thead> <tr> <th>Alarm Output to</th> <th>LdAL (x 1000)</th> <th>HdAL (x100)</th> <th>LoAL (x10)</th> <th>HIAL (x1)</th> </tr> </thead> <tbody> <tr> <td>None</td> <td>0</td> <td>0</td> <td>0</td> <td>0</td> </tr> <tr> <td>AL1</td> <td>1</td> <td>1</td> <td>1</td> <td>1</td> </tr> <tr> <td>AL2</td> <td>2</td> <td>2</td> <td>2</td> <td>2</td> </tr> <tr> <td>AU1</td> <td>3</td> <td>3</td> <td>3</td> <td>3</td> </tr> <tr> <td>AU2</td> <td>4</td> <td>4</td> <td>4</td> <td>4</td> </tr> </tbody> </table> <p>Example: $\text{AOP} = \frac{3}{\text{LdAL}} \quad \frac{3}{\text{HdAL}} \quad \frac{0}{\text{LoAL}} \quad \frac{1}{\text{HIAL}}$ It shows that HdAL and LdAL are sent to AU1, LoAL has no output, HIAL is sent to AL1.</p> <p>Note 1: When AUX is used as auxiliary output in bidirectional (heating/refrigerating) control, alarms assigned to AU1 and AU2 does not take in effect.</p> <p>Note 2: Installing L3 dual relay output module in ALM or AUX, AL2 or AU2 can be used.</p>	Alarm Output to	LdAL (x 1000)	HdAL (x100)	LoAL (x10)	HIAL (x1)	None	0	0	0	0	AL1	1	1	1	1	AL2	2	2	2	2	AU1	3	3	3	3	AU2	4	4	4	4	0~4444
Alarm Output to	LdAL (x 1000)	HdAL (x100)	LoAL (x10)	HIAL (x1)																													
None	0	0	0	0																													
AL1	1	1	1	1																													
AL2	2	2	2	2																													
AU1	3	3	3	3																													
AU2	4	4	4	4																													
nonc	NO/NC selection	<p>Single channel alarm relay can have normally open + normally closed output at the same time, but dual channel alarm module L3 only has normally open output. Normally open output can be defined as normally closed output through the nonc parameter. When nonc=0 is set, L3 relays installed at AL1, AL2, AU1 and AU2 are normally open. When nonc=15 is set, instrument alarms are normally closed. When some channels are normally open and some channels are normally closed, the nonc value can be calculated according to the following formula.</p> <p>nonc=A X 1+B X 2+C X 4+D X 8</p> <p>In the formula, A, B, C and D respectively represent the normally open and normally closed selection of AL1, AL2, AU1 and AU2. When the value is 1, the corresponding alarm is normally closed output, and when the value is 0, the corresponding alarm is normally open output.</p>																															
Ctrl	Control mode	<p>onoF: on-off control, for situation not requiring high precision</p> <p>APId: advanced artificial intelligence PID control. (Recommended)</p> <p>nPId: standard PID algorithm with anti integral-saturation function (no integral when PV-SV > proportional band)</p> <p>POP: Direct PV retransmission, working as a temperature re-transmitter.</p> <p>SOP: Direct SV retransmission, working as a program generator (AI-526P).</p>	onoF APId nPId POP SOP																														

Srun	Running Status	<p>run: Control or program is in effect. "PRG" indicator lights up.</p> <p>StoP: Control or program is stopped. Lower display keeps flashing "StoP". "PRG" indicator goes off.</p> <p>HoLd: Control or program is paused. If the controller is a constant temperature controller without time limit, (AI-526 or AI-526P with parameter Pno=0), this HoLd status is equal to normal status but panel shortcut to RUN or STOP operation is prohibited. in this status, for the controller works as program control (Pno>0), the output keeps going but the program timer is paused. At the same time, lower display flashes "HoLd" and PRG blinks. Panel shortcut to RUN or STOP is allowed to change this status.</p> <p>Remark: Using panel shortcut key is unable to activate HoLd status but only through changing Srun parameter or programmed in the program steps.</p>	StoP / run / HoLd
Act	Acting method	<p>rE: Reverse acting. Increase in measured variable causes a decrease in the output, such as heating control.</p> <p>dr: Direct acting. Increase in measured variable causes an increase in the output, such as refrigerating control.</p> <p>rEbA: Reverse acting with low limit alarm and deviation low alarm blocking at the beginning of power on.</p> <p>drbA: Direct acting with high limit alarm and deviation high alarm blocking at the beginning of power on.</p>	rE dr rEbA drbA
At	Auto tuning	<p>oFF: Auto tuning function was off.</p> <p>on: Active auto turning function to calculate the values.</p> <p>FoFF : Auto tuning function was off, cannot activate again by pressing key from panel .</p> <p>AAt, Fast auto-tuning function. After auto-tuning function is complete, it automatically returns to OFF.</p> <p>Note: When the AT parameter is set to the AAt option, the instrument can automatically activate the advanced fast auto-tuning function after power-on when the instrument is in full power heating output state. This allows the PID parameters to be pre-set without the need for traditional cycle oscillation auto-tuning, enabling accurate control in most cases with the first heating. If the AAT function fails to complete before the instrument exits the full power output state, the AAT process fails, the auto-tuning process will be terminated, and the PID parameters will not be modified.</p>	oFF / On / FoFF
P	Proportional band	<p>Proportional band in PID and APID control. Instead of percentage of the measurement range, the unit is the same as PV.</p> <p>Generally, optimal P, I, D and Ctl can obtained by auto tuning. Those values can be manually entered if they are known already.</p>	1~32000 units
I	Time of Integral	No integral effect when I=0	0~9999 seconds
d	Time of Derivative	No derivative effect when d=0	0~999.9 seconds

Ctl	Control period	<p>Small value can improve control accuracy. For SSR, thyristor or linear current output, it is generally 0.5~3 sec. For Relay output or in a heating/refrigerating dual output control system, generally 15~40 sec, because small value will cause the frequent on-off action of mechanical switch or frequent heating/refrigerating switch, and shorten its service life. Ctl is recommended to be 1/5 – 1/10 of derivative time. (It should be integer times of 0.5 second.)</p> <p>When the parameter OPt or Aut = rELy, Ctl will be limited to more than 3 seconds. Auto tuning will automatically set Ctl to suitable value considering both control precision and mechanical switch longevity.</p> <p>When the parameter CtrL = onoF, Ctl will be used as timer to make delay time to avoid the power restart in short period. It suit for compressor protection.</p>	0.2~300.0 Sec																																						
P2	2 nd Proportional band	<p>The 2nd proportional band in PID and APID control. Instead of percentage of the measurement range, the unit is the same as PV. Generally, optimal P, I, D and Ctl can obtained by auto tuning. They can also be manually inputted if you already know the correct values.</p>	1~32000 units																																						
I2	2 nd Time of Integral	No integral effect when I=0	0~9999 seconds																																						
d2	2 nd Time of Derivative	No derivative effect when d=0	0~999.9 seconds																																						
Ctl2	2 nd Control period	When SSR, SCR or current output is used, it is typically set between 0.5-3.0 seconds. When the output is configured as a relay switch (OPT or AUT set to rELY), the actual Ctl will be limited to a minimum of 3 seconds. A typical recommended value is 20~40 seconds.	0.2~300.0 Sec																																						
CHYS	Control Hysteresis	<p>CHYS is used for on-off control to avoid frequent on-off action of relay. For a reverse acting (heating) system, when PV > SV, output turns off; when PV<SV-CHYS, output turns on. For a direct acting (cooling) system, when PV<SV, output turns off; when PV>SV+CHYS, output turns on.</p>	0~2000																																						
InP	Input specification Code	<table border="1"> <tr><td>0 K</td><td>21 Pt100</td></tr> <tr><td>1 S</td><td>22 Pt100 (-80.00~+300.00℃)</td></tr> <tr><td>2 R</td><td>25 0~75mV voltage input</td></tr> <tr><td>3 T</td><td>26 0~100 ohm resistance input</td></tr> <tr><td>4 E</td><td>27 0~400 ohm resistance input</td></tr> <tr><td>5 J</td><td>28 0~20mV voltage input</td></tr> <tr><td>6 B</td><td>30 0~60mV voltage input</td></tr> <tr><td>7 N</td><td>31 0~1V voltage input</td></tr> <tr><td>8 WRe3-WRe25</td><td>32 0.2~1V voltage input</td></tr> <tr><td>9 WRe5-WRe26</td><td>33 1~5V voltage input</td></tr> <tr><td>10 User-specified extended input</td><td>34 0~5V voltage input</td></tr> <tr><td>12 F2 radiation high-temperature</td><td>35 -20~+20mV voltage input</td></tr> <tr><td>13 T (0~300.00℃)</td><td>37 -5V~+5V voltage input</td></tr> <tr><td>15 MIO Input 1 (Installed with I44</td><td>38 10~50mV voltage input</td></tr> <tr><td>16 MIO Input 2 (Installed with I44</td><td>39 15~75mV voltage input</td></tr> <tr><td>17 K (0~300.00℃)</td><td>4~20mA Current input (for D61 only; J4 input shall</td></tr> <tr><td>18 J (0~300.00℃)</td><td>42 0~10V voltage input</td></tr> <tr><td>19 Ni120</td><td>43 2~10V voltage input</td></tr> <tr><td>20 Cu50</td><td>44 -10V~+10V voltage input</td></tr> </table> <p>Note : While InP=10, the non-linear table can be self-defined or input by factory under a paid service.</p>	0 K	21 Pt100	1 S	22 Pt100 (-80.00~+300.00℃)	2 R	25 0~75mV voltage input	3 T	26 0~100 ohm resistance input	4 E	27 0~400 ohm resistance input	5 J	28 0~20mV voltage input	6 B	30 0~60mV voltage input	7 N	31 0~1V voltage input	8 WRe3-WRe25	32 0.2~1V voltage input	9 WRe5-WRe26	33 1~5V voltage input	10 User-specified extended input	34 0~5V voltage input	12 F2 radiation high-temperature	35 -20~+20mV voltage input	13 T (0~300.00℃)	37 -5V~+5V voltage input	15 MIO Input 1 (Installed with I44	38 10~50mV voltage input	16 MIO Input 2 (Installed with I44	39 15~75mV voltage input	17 K (0~300.00℃)	4~20mA Current input (for D61 only; J4 input shall	18 J (0~300.00℃)	42 0~10V voltage input	19 Ni120	43 2~10V voltage input	20 Cu50	44 -10V~+10V voltage input	0~106
0 K	21 Pt100																																								
1 S	22 Pt100 (-80.00~+300.00℃)																																								
2 R	25 0~75mV voltage input																																								
3 T	26 0~100 ohm resistance input																																								
4 E	27 0~400 ohm resistance input																																								
5 J	28 0~20mV voltage input																																								
6 B	30 0~60mV voltage input																																								
7 N	31 0~1V voltage input																																								
8 WRe3-WRe25	32 0.2~1V voltage input																																								
9 WRe5-WRe26	33 1~5V voltage input																																								
10 User-specified extended input	34 0~5V voltage input																																								
12 F2 radiation high-temperature	35 -20~+20mV voltage input																																								
13 T (0~300.00℃)	37 -5V~+5V voltage input																																								
15 MIO Input 1 (Installed with I44	38 10~50mV voltage input																																								
16 MIO Input 2 (Installed with I44	39 15~75mV voltage input																																								
17 K (0~300.00℃)	4~20mA Current input (for D61 only; J4 input shall																																								
18 J (0~300.00℃)	42 0~10V voltage input																																								
19 Ni120	43 2~10V voltage input																																								
20 Cu50	44 -10V~+10V voltage input																																								

dPt	Display Resolution	<p>Four display formats are available for selection: 0, 0.0, 0.00, and 0.000.</p> <p>Note 1: For thermocouple or resistance temperature detector inputs, either the 0 or 0.0 display format can be selected. Even when the 0 format is selected, an internal resolution of 0.1 ° C is maintained for control calculations. When using S, R, or B-type thermocouples, it is recommended to select the 0 format. When INP=17, 18, or 22, the instrument has an internal resolution of 0.01 ° C, and the display formats 0.0 or 0.00 can be selected.</p> <p>Note 2: When using linear inputs, if the measured value or other related parameters are expected to exceed 9999, it is recommended not to select the 0 format but instead use the 0.000 format. This is because, once the value exceeds 9999, the display format will change to 00.00.</p>	0 / 0.0 / 0.00 / 0.000
ScL	Signal scale low limit	Define scale low limit of input. It is also the low limit of transmitter output (Ctrl=POP or SOP) and light bar display.	-9990~ +32000 units
ScH	Signal scale high limit	Define scale high limit of input. It is also the high limit of retransmission output (Ctrl=POP or SOP) and light bar display.	
Scb	Input Shift Adjustment	<p>Scb is used to shift input to compensate the error caused by transducer, input signal, or auto cold junction compensation of thermocouple.</p> <p>PV after compensation=PV before compensation + Scb</p> <p>It is generally set to 0. The incorrect setting will cause measurement inaccurate.</p>	-1999~ +4000 units
FILt	PV input filter	<p>The value of FILt will determine the ability of filtering noise.</p> <p>When a large value is set, the measurement input is stabilized but the response speed is slow. If high interference exists, you can increase parameter "FILt" gradually to make momentary fluctuation of measured value less than 2 to 5 digits.</p> <p>When the instrument is being metrological verified, FILt can be set as 0 or 1 to shorten the response time. The unit of FILt is 0.5 second.</p>	0~40
Fru	Selection of power frequency and temperature scale	<p>50C: 50Hz, display °C. , 50F: 50Hz, display °F</p> <p>60C: 60Hz, display °C. , 60F: 60Hz, display °F.</p> <p>Input has max. anti-interference ability to 50Hz or 60Hz frequency when parameter set;</p>	50C, 50F, 60C, 60F
OPT	Main output type	<p>SSr: Output SSr drive voltage or thyristor zero crossing trigger signal. G, K1 or K3 module should be installed. The output power can be adjusted by the on-off time proportion. The period (Ctl) is generally 0.5~4 seconds.</p> <p>rELy: for relay contact output or for execution system with mechanical contact switch. To protect the mechanical switch, the output period (Ctl) is limited to 3~120 seconds, and generally is 1/5 to 1/10 of derivative time.</p> <p>0-20: 0~20mA linear current output. X3 or X5 module should be installed in OUPt slot.</p> <p>4-20: 4~20mA linear current output. X3 or X5 module should be installed in OUPt slot. (Not applicable for heating/refrigerating bidirectional control.)</p> <p>PHA: Single-phase phase-shift output. K50 module should be installed in OUPt slot. PHA is only for 50Hz power supply. Under PHA mode, AUX is not available as cooling output.</p>	SSr rELy 0-20 4-20 PHA

Aut	Auxiliary output type	<p>Define AUX only when AUX is worked as the auxiliary output of a heating/refrigerating bidirectional system.</p> <p>SSr: to output SSr driver voltage or thyristor zero crossing trigger signal. G or K1 module should be installed. The output power can be adjusted by adjusting the on-off time proportion. The period (Ctl) is generally 0.5~4 seconds.</p> <p>rELy: for relay contact output or for execution system with mechanical contact switch. To protect the mechanical switch, the output period (Ctl) is limited to 3~120 seconds, and generally is 1/5 to 1/10 of derivative time.</p> <p>0-20: 0~20mA linear current output. X3 or X5 module should be installed in AUX slot.</p> <p>4-20: 4~20mA linear current output. X3 or X5 module should be installed in AUX slot. (Not applicable for heating/refrigerating bidirectional control.)</p> <p>Note: If OPt or Aut is set to rELy, the output period is limited to 3-120 seconds by principle. If the heating or cooling output signal is 4-20mA, the signal for cooling output will return to zero when the heating has an output and the output is 0mA instead of 4mA; the signal for heating output will return to zero when the cooling has an output, and the output is 0mA instead of 4mA .</p>	SSr rELy 0-20 4-20
OPL	Output low limit	<p>0~100%: OPL is the minimum output of OUTP in single directional control system.</p> <p>-1~-110%: The instrument works for a bidirectional system, and has heating/refrigerating dual output. When Act=rE or rEbA, OUTP (main output) works for heating, and AUX (Auxiliary output) works for refrigerating. When Act=dr or drbA, OUTP works for refrigerating, and AUX works for heating.</p> <p>In a bidirectional system, OPL for define the limitation of maximum cooling output. So, when the OPL= -100%, means no limitation on cooling output. If set OPL=-110%, it can made current output excess 10% on maximum output. When the output type is SSR output or relay output, maximum of cooling output should not set more than 100%</p>	-110~ +110%
OPH	Output upper limit	<p>OPL limits the maximum of OUTP (main output) when PV<OEF. OPH should be greater than OPL.</p>	0~110%
OEF	Work range of OPH	<p>When PV<OEF, the upper limit of OUTP is OPH; when PV>OEF, the upper limit of OUTP is 100%.</p> <p>For example, to avoid that the temperature raises too quickly, under 150℃, a heater can work only under 30% of power, then we can set OEF=150.0 (℃), OPH=30 (%)</p>	-999~ +3200
Addr	Communication address	<p>In the same communication line, different instrument should be set to different address.</p>	0~80

bAud	COMM Module Function Selection	<p>The bAud parameter defines the communication baud rate, which can be set within the range of 0~28800 bit/s (28.8K). When the baud rate exceeds 9600 bit/s and a 4-digit segment display is used, values like 19.20 represent 19200 bit/s. If the COM position is not used for communication, the bAud parameter can be configured to assign the COM port for other functions.</p> <p>BAUD=0: Configure the COMM port to output a 0-20mA measurement value;</p> <p>BAUD=1: Configure the COMM port as an external digital input, with functionality equivalent to the MIO position. If the MIO position is occupied, the I2 module can be installed in the COMM position;</p> <p>BAUD=2: Configure the COMM port as AU1+AL1 output, suitable for small-sized instruments;</p> <p>BAUD=3: Configure the COMM port as AU1+AU2 output, suitable for small-sized instruments;</p> <p>BAUD=4: Configure the COMM port to function as a 4~20mA measured value transmitter output;</p> <p>BAUD=8: Configure the COMM port to function as a 0~20mA setpoint value transmitter output;</p> <p>BAUD=12: Configure the COMM port to function as a 4~20mA setpoint value transmitter output;</p>	0~28.8K
Et	Event input type	<p>Et event input is extended to 2 channels (for dual inputs, a module such as I5 must be installed). The Et parameter is defined as $Et = Et1 * 10 + Et2$, where Et1 and Et2 represent event inputs 1 and 2, respectively. The numeric meanings of Et1 or Et2 are as follows: set, the system will execute Et1 first and then Et2, with the result subject to Et2.</p> <p>0 (nonE): Event input function is not enabled.</p> <p>1 (ruSt): Button-type Run/Stop function. A brief connection of the MIO starts the run control (RUN). A long press (holding for more than 2 seconds) stops the control (STOP).</p> <p>2 (SP1.2): When in fixed-point temperature control mode (Pno=0), it switches the setpoint. When the MIO switch is off, the setpoint is $SV = SP 1$, and when the MIO is on, the setpoint is $SV = SP 2$.</p> <p>3 (PI d2): For unidirectional control (non-heating/cooling dual output control), when the MIO switch is off, P, I, d, and Ctl parameters are used for calculation and regulation. When the MIO switch is on, P2, I2, d2, and Ctl2 parameters are used for regulation and calculation.</p> <p>4 (EAct): External switch for switching between heating/cooling control functions. When the MIO switch is off, the P, I, d, and Ctl parameters are used for heating regulation. When the MIO switch is on, the P2, I2, d2, and Ctl2 parameters are used for cooling regulation.</p> <p>5 (Eman): External digital input for toggling between manual/automatic modes. When the switch is off, the instrument is in automatic mode. When the switch is on, the instrument is in manual mode.</p> <p>6 (Erun): Switch-type external digital input for toggling between run/stop. When the switch is off, the instrument stops; when the switch is on, the instrument runs.</p> <p>7 (Eout): When the external switch is on, the main output is forcibly set to 0 or the Ero output. (Based on the AF2.E parameter settings).</p> <p>Note: If $Et1 = Et2$ is set, the system will execute Et1 first, then Et2, with the result determined by Et2</p>	

<p>AF</p>	<p>Advanced function</p>	<p>The AF parameter is used to select the advanced function, and its calculation method is as follows: $AF=A \times 1+B \times 2 +C \times 4 +D \times 8+E \times 16+F \times 32+G \times 64 +H \times 128$ A=0: HdAL and LdAL function as deviation alarms. A= 1: HdAL and LdAL function as absolute value alarms, allowing the instrument to have 2 groups of absolute value high limit alarms and absolute value low limit alarms. B=0: The alarm and ON-OFF hysteresis work as unilateral hysteresis. B=1: As bilateral hysteresis. C=0: The third row of the instrument includes one decimal place. C=1: The third row of the instrument does not include a decimal point (only applicable for three-row display). D=0: The password to access the parameter table is the public 808. D=1: The password is the value of the parameter PASd. Long press the left button to find LOC after switching to the field parameter. E=0:HIAL and LOAL function as the absolute value high limit alarm and the absolute value low limit alarm, respectively. E=1: HIAL and LOAL change to deviation high limit alarm and deviation low limit alarm, respectively, allowing for 4 deviation alarms. F=0 indicates fine control mode, where the internal control resolution is 10 times the display resolution, but for linear input, the maximum display value is limited to 3,200 units. F=1 represents high-resolution display mode. This mode should be selected when the required display value exceeds 3,200. G=0: A high limit alarm is allowed when the measurement value increases due to sensor disconnection (the high limit alarm setting value should be below the signal's upper range limit). G=1: A high limit alarm is not allowed when the measurement value increases due to sensor disconnection. Please note that in this mode, even normal high limit alarms (HIAL) will be delayed by approximately 15 seconds before being triggered. H=0: HIAL and LOAL follow independent alarm logic. H=1: HIAL and LOAL are changed to interval alarms, where an alarm will only trigger when $LOAL>PV>HIAL$. The alarm code will be HIAL, and the output will also use HIAL. Note: For non-expert users, this parameter can be set to 32.</p>	<p>0~255</p>
<p>AFC</p>	<p>Communication Mode</p>	<p>The AFC parameter is used to select the communication mode, calculated as follows: $AFC=A \times 1+D \times 8+G \times 64$. A = 0: The communication protocol used by the instrument is standard MODBUS. A = 1: The communication protocol used by the instrument is AIBUS. A = 2: The communication protocol used by the instrument is MODBUS compatibility mode. A = 4: The communication protocol used by the instrument is compatible with S6 module communication functionality. D = 0: No parity check. D = 1: Even parity check. G = 0: AUX is used for normal operation. G = 1: AUX is used as an event input. Note: When the AFC is set to the MODBUS protocol, it supports two commands: 03H (read parameter and data) and 06H (write single parameter). When AFC = 0 or 4, the 03H command can read up to 20 words of data in a single request. When AFC= 2, the 03H command will read a fixed amount of 4 words of data. For detailed information, please refer to the communication protocol instruction.</p>	<p>0~12</p>

PASd	Password	<p>When PASd=0~255 or AF.D=0, set Loc=808 can enter the whole parameter table.</p> <p>When PASd=256~9999 and AF.D=1, only Loc=PASd can access the whole parameter table.</p> <p>Please setting PASd cautiously, if the password is lost, you can't access the parameter table again.</p>	0~9999
SPL	Low limit of SV	Minimum value that SV is allowed to be.	-999~
SPH	Upper limit of SV	Maximum value that SV is allowed to be.	+3000 unit
SP1	SetPoint 1	When Pno=0 or 1, SV=SP1 (AI-526 or AI-526P with Pno=0 or Pno=1)	SPL~SPH
SP2	SetPoint 2	When I2 module installed in MIO slot and parameter Et=SP1.2, an external switch can switches the SV between SP1 and SP2. When MIO is open, SV=SP1. When MIO is closed, SV=SP2. (AI-526 or AI-526P with Pno=0 or Pno=1)	
SPr	Ramp Slope limit (Only for AI-526P)	<p>If SPr is set to active, during program operation or when changing the setpoint, the instrument will heat up to the setpoint at the heating rate defined by SPr, provided the measured value is lower than the setpoint. When the heating rate limit is active, the PRG indicator will flash.</p> <p>SPr is effective in point control mode (Pno=0) and program platform mode. This function is not used in slope mode.</p> <p>When the C item of PAF is set to 1, the units of SPr and SPrL change to °C/hour.</p>	0~3200 °C /minute
Pno	No. of Program step (Only for AI-526P)	<p>It is used to define the number of valid program segments, with a value range of 0~30, which can reduce unnecessary program segments and facilitate the final customers in operation and program setting. When Pno=0 is set, AI-526P is in constant temperature mode and can be fully compatible with the operation of AI-526; meanwhile, the SPr parameter can also be set to limit the heating rate. When Pno=1 is set, it is in single-segment program mode, where only one set value and one holding time need to be set, making the setting very convenient. When Pno=2~30 is set, AI-526P operates in the normal program control instrument operation mode.</p>	0~30
PonP	Program run mode after power restart	<p>Cont : Continue to run the program from the original break point. If STOP status is activated before power cut, then the program will keep at STOP status after power restarts.</p> <p>StoP : Stop the program after power restart</p> <p>run1 : Start to run the program from step 1 unless the instrument was in "STOP" status before power cut.</p> <p>dASt : Continue to run the program from the original break point. If there are any deviation alarm, it will stop the program</p> <p>HoLd (AI-526P only): No matter any circumstances, the instrument goes to HoLd status after power resumes. If it is in StoP status before power cut, it will keep in StoP status after power resumes.</p>	

<p style="text-align: center;">PAF</p>	<p style="text-align: center;">Program Running mode (Only for AI-526P)</p>	<p>The PAF parameter is used to select the program control function, and its calculation method is as follows:</p> $PAF=A \times 1 + B \times 2 + C \times 4 + D \times 8 + E \times 16 + F \times 32 + G \times 64 + H \times 128$ <p>A=0: The preparation function (rdy) is disabled. A=1: The preparation function is enabled.</p> <p>B=0: Slope mode. When there is a temperature difference during program operation, the temperature transition follows a stepped profile. Different heating modes can be defined, and cooling operation is also possible. B=1: Platform mode (constant temperature mode). Each program segment defines a setpoint value and hold time. The transition to the next segment can be limited by the rdy function, and the heating/cooling rate can be restricted by the SPr/SPrL parameters. Additionally, even if B=0 is set, if the last program segment is not an end command, the system will still operate in constant temperature mode and automatically finish when the set time is reached.</p> <p>C=0: Program time is in minutes. C=1: Time is in hours.</p> <p>D=0: No measurement-based start function. D=1: Measurement-based start function is enabled.</p> <p>E=0: Program event outputs 1 and 2 are assigned to AL1 and AL2 outputs, respectively. E=1: Program event outputs 1 and 2 are assigned to AU1 and AU2 outputs, respectively.</p> <p>F=0: Standard operation mode. F=1: During program operation, executing the RUN operation will enter a pause (HoLd) state.</p> <p>G=0: Program time is determined by item C. G=1: Time is in seconds.</p> <p>H=0: Standard operation mode. H=1: In slope mode, each segment has a preparation function (rdy).</p>	
<p style="text-align: center;">EP1~EP8</p>	<p style="text-align: center;">Field parameter definition</p>	<p>Define 1~8 field parameters for those common used parameters when the Loc lock is applied. If there is none or less than 8 field parameters, please set as nonE.</p>	<p style="text-align: center;">nonE and all parameter codes</p>

3.3 Additional Explanation on Special Functions

3.3.1 Single-phase phase-shift trigger output

When OPT is set to PHA, installing a K50 or K60 module in OUPt slot can single-phase phase-shift trigger a TRIAC or 2 inverse parallel SCRs. It can continuously adjust heating power by control the conduction angle of thyristor. With non-linear power adjustment according to the characters of sine wave, it can get ideal control. The trigger adopts self-synchronizing technology, so it can also work even when the power supplies of the instrument and the heater are different. Phase-shift trigger has high interference to the electric power, so user should pay attention to the anti-interference ability of other machines in the system. Now the K50 or K60 module can be only used in 50Hz and 60Hz power grids.

3.3.2 Alarm blocking at the beginning of power on

Sometimes the fault alarm may occur at the beginning of power on. In a heating system, at the beginning of power on, its temperature is much lower than the set point. If low limit and deviation low limit are set and the alarm conditions are satisfied, the instrument should alarm, but there is no problem in the system. Contrarily, in an refrigerating system, the unnecessary high limit or deviation high limit alarm may occur at the beginning of power on. Therefore, AI instruments offer the function of alarm blocking at the beginning of power on. When Act is set to rEbA or drbA, the corresponding low or high alarms are blocked until the alarm condition first clears. If the alarm condition is satisfied again, the alarm will work.

3.3.3 Setpoints switch

If an I2 module is installed in MIO slot (or bAud=1 and I2 installed in COMM slot), connecting an external switch can execute control function. Setting Et=ruSt, press the button to run (RUN) while press and hold the button over 2 seconds to stop (STOP). For AI-526 (AI526P with Pno=0) with Et=SP1.2, it can switch between SP1/SP2.

3.3.4 Communication function

S or S4 module can be installed at COMM slot to communicate with a computer. The instrument can be controlled by computer. AI instruments can be connected to the computer through RS232C/RS485 convertor or USB/RS485 convertor. Every communication port of a computer can connect up to 60 AI instruments. With RS485 repeater, up to 80 AI instruments can be connected. If large quantity of instrument is required, 2 or above computers can be used with a local network formed. Please note that every instrument connecting to the same communication line should be set to a unique communication address.

AIDCS application software, a distributed control system software developed by Yudian, can control and manage 1~200 AI instruments, record the data, generate and print reports. If users want to develop their own distributed control system by themselves, the communication protocol of AI instruments can be free offered. There are many famous distributed control system software support AI instruments.

3.3.5 Temperature re-transmitter / Program generator / Manual current output

Besides AI PID, stand PID control and on-off control, if the output is defined as current output, the instrument can also retransmit PV (process value) or SV (setpoint) into linear current and output from OOTP. The precision of current output is 0.2%FS. Base on that ability, AI-526 can become temperature re-transmitter and AI-526P can become program generator

The corresponding parameters are set as below:

When Ctrl=PoP, PV is retransmitted. When Ctrl=SOP, SV is transmitted.

Parameter OPt, defines the specification of output, generally it is 4~20mA or 0~20mA.

Parameter InP, SCH, SCL and Scb define the input specification, setting low limit or high limit of PV and doing adjustment.

For example, in order to retransmit temperature reading from a K-type thermocouple, ranging 0~400℃, output as current 4~20mA, the parameters are set as below: InP=0, ScL=0.0, ScH=400.0, OPt=4-20. X3 or X5 linear current module is installed in OOTP slot. When the temperature is lower than or equal to 0℃, the output is 4mA. When the temperature equals to 400℃, the output is 20mA. When the temperature reading is in between 0~400℃, the output will sit between 4~20mA.

3.3.6 Custom Input Specifications

Add the input specification value by 64 will activate the multiple segmented linear correction of the input signal. Set parameter Loc = 3698 and press confirm button will enter the particular settings. (If originally Loc = 808, it is required to firstly set Loc = 0. Exit parameter setting. Set back Loc = 3698.) Parameter A 00 defines the usage of the table. 0 is used to multiple segmented linear correction. 1 is used for non-linear power control in high temperature furnace. There are A01~A04 and d00~d59 parameters available.

A00: 0;

A01: Input specification and display setting;

Formula explanation: **A 01 = Ax1 + Ex16 + Gx64**

A represents the input signal range: 0: 0~20mV (0-80 Ω); 1: 0~60mV (0-240 Ω); 2: 0~100mV (0-400 Ω); 4: 0~5V; 10: 0~20mA or 0~10V (I44 module installed at the MIO position)

E refers to the signal display.

E=0: Null;

E=1: Values set in table d00~d59 are the display value.

G refers to the type of signal.

G=0: Thermocouple;

G=1: RTD;

G=2: Linear voltage (current);

G=3: Linear resistance.

For example, set $A01 = 2 \times 1 + 1 \times 16 + 0 \times 64 = 18$ if the input is thermocouple and the type of signal is temperature.

A 02: Define the lower limit of the input signal, equal to the lower limit of the signal $\times K/\text{range}$, e.g. for 1-5V signal input, $A02=1 \times 25000/5=5000$.

K is the signal coefficient, when A01. A=0, K=20000; when A01. A=2, 4 or 10, K=25000; when A01. A=1, K=30000.

A 03: Define the input signal range, equal to the signal range $\times K/\text{range}$, for example, for 1-5V input, if $5-1V=4V$, then $A03=4 \times 25000/5=20000$.

A 04: Define the table spacing of input signals, $A04=A03/\text{number of curve segments}$. If there is only one segment, then $A04=A03$; If there are two segments, then $A04=A03/2$.

d 00: Represents the starting value of the curve table, which corresponds to the output value when the input signal is A02. For example, $d 00=0$.

d 01: represents the first segment value of the curve table, which corresponds to the output value when the input signal is $A02+A04$, for example, set $d 01=20000$ for 1-5V input (full scale).

d 02-d59: indicates the values from the 2nd to 59th segments of the curve table. All applications can correct very complex curves, such as square root, logarithmic and exponential curves.

3.3.7 Multiple Segmented Linear Correction of Input Signal

When the input specification InP is set to plus 64, the instrument has multi-segment linear correction function. Setting method: Set parameter Loc=3698 to enter the list setting status (if originally Loc=808, set Loc=0 first to exit the parameter setting status, then enter the parameter status again to set Loc=3698). The settings are as follows:

A00: 0;

A01: Input signal and display setting:

$A 01=A \times 1+E \times 16+G \times 64$

A signal range: A=0, 0~20mV (0-80 Ω); A=1, 0~60mV (0-240 Ω); A=2, 0~100mV (0-400 Ω).

E signal display: E=0, no effect; E=1, the set values in the list d00~d59 are the displayed values.

G signal type: G=0, thermocouple; G=1, thermal resistance.

For example, if the signal is thermocouple input and temperature type, set $A01=2 \times 1+1 \times 16+0 \times 64=18$

A02: Starting temperature

A03: Measuring range=highest value measured - A02

A04: Temperature interval of each segment= $A03/\text{number of segments}$

D00~d59: Set value for temperature of each segment

For example, the input range of K thermocouple is 0 to 300 $^{\circ}\text{C}$, one decimal place, correct every 100 $^{\circ}\text{C}$. Then set parameters A00=0, A01=18, A02=0.0, A03=300.0, A04=100.0, d00=0.0, d01=100.0, d02=200.0, d03=300.0. Just set the corresponding temperature slightly higher or lower than the value displayed on the instrument, for example, the instrument shows 200.0 $^{\circ}\text{C}$, and the calibration measures 202.0, then change $d02=200.0$ to $d02=202.0$.

Note: The corrected value is the value of each point, and the point-to-point transition is automatic and linear. When this function is enabled, the instrument can only be displayed within the temperature range set by the list. When the actual temperature exceeds the range, the instrument will flash orAL to alarm.

3.3.8 Non-linear Power Control of High Temperature Furnace

For those load is non-linear high temperature furnace, the load resistance dramatically changes with temperature changes. Take an example of a silicon-molybdenum furnace, its resistance at room temperature is only about 6% of that at 1600 degree Celsius. If there is no restriction and change on the power output from the controller, two problems will be occurred. Firstly, the furnace current will be too large at the start up at low temperature. The power grid, thyristor and transformer would be overloaded and damaged. If the power output of a controller is kept constant, the furnace power rating in low temperature zone and high temperature zone can be deviated by over 10 times. In such situation, proportional band (P) among the PID parameters is required to change over 10 times to achieve accurate control. Applying parameter OPH can only limit output power but not changing the P value to achieve accurate control. Using multiple set of PID parameters is not desirable and complex in handling. Customized

power output restriction here is able to both limits the output and changes P value. This function changes and applies restriction based on the measured temperature. Apart from limiting power in low temperature zone, it automatically adjusts P values in various temperatures. Both the power limit and adjustment of P are changed in way of continuous line. Thus the control performance is better than using sets of PID. This power limit lowers the actual output of the controller while the display of power output is still 0~100%.

Here is a suggested configuration for of a silicon-molybdenum furnace.

A00 = 1; A01 = 1050; A02 = 100.0; A03 = 1500; A04 = 750.0; d00 = 120.0; d01 = 1100; d02 = 2000

When A00 = 1 and A01 = 1050, the customized power output restriction is activated. A02 refers to initial temperature when the power limit starts. A03 refers to the temperature interval of the limit. A04 refers to the length of interval of non-linear temperature. In this example, there are two temperature sections ($1500/750.0 = 2$). The more the number of sections divided, the curve can be drawn more concise. d00 refers to the maximum output power below A02. The unit is $100\% \times (1/2000)$. d00 = 120 refers to 6%. d01 is set as 55%. d02 is set as 100%.

The purpose of this curve is to limit the output to 6% when the temperature is below 100°C . The limit smoothly transits from 6% to 55% when the temperature sits between $100 \sim 850^{\circ}\text{C}$. The limit smoothly transits from 55% to 100% when the temperature sits between $850 \sim 1600^{\circ}\text{C}$. The limit is not applicable when the temperature is higher than 1600°C .

Remark:

The available range of d values is 0~59 which is 60 intervals of power limit. This function cannot be used at the same time with the “Multiple segmented linear correction of input signal” mentioned in the previous section of this manual. If special input specification is required, contact the sales representative to burn the code into the controller. Service charge applies.

4. Program Control (AI-526P Only)

AI-526P program temperature controller is used in the application where the set point to be changed automatically with the time. It provides 30 segments program control which can be set in any slope and the function of jump, run, hold and stop can also be set in the program. Measurement startup function, preparation function and power-cut/power-resume event handling modes also provided.

4.1 Functions and Concepts

StEP:

The number of the program Step can be defined from 1 to 30. The current Step is the program Step being executing.

StEP time:

Total run time of the program step. The unit is minute and the available value range from 1 to 9999.

Running time:

The Time of current Step has run. As the running time reaches the Step time, the program will jump to the next Step automatically.

Jump:

The program can jump to any other steps in the range of 1 to 30 automatically as you programmed in the program Step, and realize cycle control.

Run/Hold:

When program is in the running status, timer works, and set point value changes according to the preset curve. When program is in the holding status, timer stops, and set point remains to make temperature hold also. The holding operation can be programmed into the program step.

Stop:

When the stop operation is activated, the program will stop, running time will be clear, event output switch will reset and the output control will stop output. If run operation is activated when instrument is in the stop status, the program will start-up and run again from the set step no. The stop function can be programmed into the program Step. The stop operation can also be performed manually at any time. (After stop operation is done, the step no. will be set to 1, but user can modify it again). If the program ran the last step of "Pno", program will stop automatically.

Power cut/resume event handling:

There are 5 events handling method selectable for power resume after power cut off. Please refer to parameter PonP.

PV startup and PV preparation function (rdy function) :

At the beginning of starting a program, resuming a program after power cut or continuing to run a program after it is just modified, the PV (process value) are often quite different from the set point. PV startup function and PV preparation function can make PV and set point consistent, and avoid unexpected result. When PV startup function enabled, the instrument will adjust the running time automatically to make the expected set point is the same as the current PV.

For example, the program is set that the temperature will be raised from 25°C to 625°C in 600 minutes. But the current PV is 100°C, then the instrument will automatically to run this program start from 75 minutes, that mean changed the temperature raised from 100°C to 625°C in 525 minutes (600-75) min.

At the above situation(PV=100, SV=25, first step SV), when PV preparation function is enable, the alarm function will be blocked at that time, and PV will be adjusted to approach SV until the deviation alarm condition is released (PV is between SV-LdAL and SV+HdAL). After deviation alarm was off, the controller starts to run the program again. Preparation function (rdy Function) is helpful to keep the integrity of the program, but it will prolong the program time because the start of the program is postponed.

PV startup function is prior to PV preparation function. If both function are enabled, the system apply PV startup first, if PV startup function works, PV preparation function will not be activated.

Curve fitting:

Curve fitting is adopted as a kind of control technology for AI-526P series instrument. As controlled process often has lag time in system response, by the way of curve fitting the instrument will smooth the turning point of the linear heating-up, cooling-down and constant temperature curves automatically. The degree of the smooth is relevant with the system's lag time t ($t=d+CtI$) ; the longer of the lag time, the curve will more smooth. On the opposite the smooth function will be weaker. Generally the shorter of the process lag time (such as temperature inertia), the better of the program control on effect. By the way of the curve fitting to deal with the program curves, will avoid overshoot. Note: The characteristic of the curve fitting will force the program control to generate fixed negative deviation during the linear heating-up and fixed positive deviation during the linear cooling-down, the deviation is direct proportional to the lag time and the speed of heating-up (cooling-down). This phenomenon is normal.

4.2. Program Arrangement

4.2.1 Ramp Mode

Programming of instrument has uniform format of temperature-time-temperature, which means temperature "A"(SP 1), passed Time "A"(t01), then reached Temperature "B"(SP 2). The unit of temperature set is °C and the unit of time set is minute. The following example includes 5 steps, which is linear temperature heating up, constant temperature, linear temperature cooling down, jump cycling, ready, Hold..

StEP1: SP 1=100 , t 1=30.0 Start linear temperature heating up from 100°C, and the time needed 30 minutes to reach SP 2(400 degree).

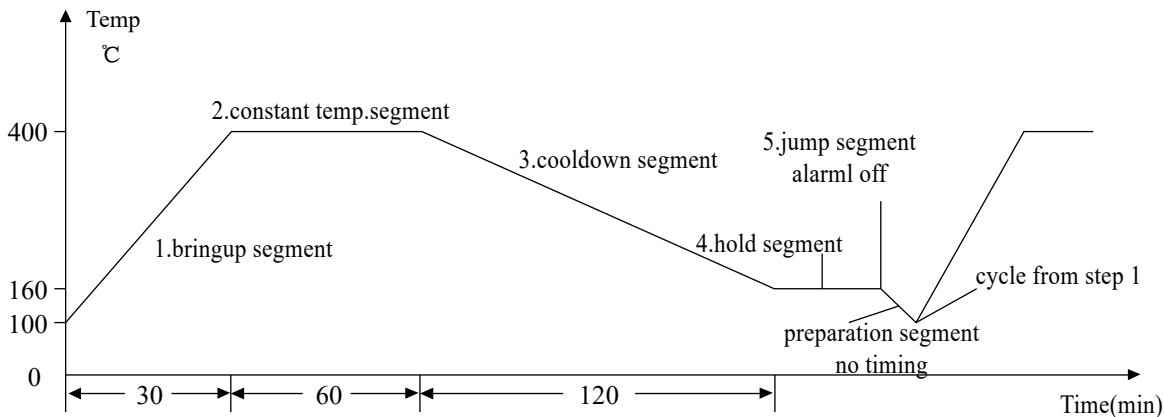
StEP2: SP 2=400 , t 2=60.0 Temperature raised to 400°C, slope of raising curve is 10°C/minute, The program take 60 minutes to raise temperature to SP3 (400 degree). It means keep the same temperature in 60 minutes.

StEP3: SP 3=400 , t 3=120.0 This is the step for temperature cooling down, slope of cooling curve is 2°C/minute, and the time needed is 120 minutes to reach SP4 (160degree).

StEP4: SP 4=160 , t 4=0.0 When temperature reached 160 degree, the program get in Hold state. If need go to next step, it needed operator to executed the “run” for next step.

StEP5: SP 5=160 , t05=-1.0 Jump to StEP1 to start from beginning.

In this example, it is assumed that the deviation high alarm is set to 5℃. Because the temperature of StEP 5 is 160℃, and the temperature of StEP1 is 100℃, when program jumps from StEP 5 to StEP 1, the program will change to preparation state at first(if preparation mode “rdy” was enabled), i.e., Control the temperature until the deviation between setpoint and PV is less than deviation high alarm value. After temperature is controlled to 105℃, the program will be started from StEP 1, and run the above steps again. The temperature control drawing was shown below.



The advantage of using temperature-time programming method is that the slope setting range of temperature rise and drop is very wide. The heating and constant temperature sections have a unified setting format, which is convenient for learning. Besides, it is more flexible to set curve, and possible to set a continuous heating section (for example, use a heating section with different slopes to approximate functional heating), or a continuous constant temperature section as well.

4.2.2 Soak Mode

When parameter PAF.B=1 is set, the platform mode can be selected, which is suitable for applications that do not need to set the temperature rise slope independently and do not need to set the temperature drop slope(The heating rate can be limited by the SP_r. SP_r=0 means full speed heating).

1st segment SP 1=100.0; t 1=30.0; temperature at 100 °C for 30 minutes

2nd segment SP 2=400.0 t 2=60.0; temperature at 400 °C for 60 minutes

Since the temperature rise time will occupy the holding time, rdy can be set to be effective to ensure the correct constant temperature time.

4.2.3 Time setting

Set “t-xx” = 0.1~3200 (min)

Set the time of xx StEP. (Time units can be change to Hour by parameter “PAF”.)

Set “t-xx” = 0.0

The program hold on StEP xx, program will hold running and hold counting time.

Set “t-xx” = -121.0

The program stops, and switches to stop status.

Set “t-xx” = -0.1~-122.0

Negative value of this range represents a jump operation which will jump to step xx and event output. Range -1~-120 is for step jumping application. The step jumping cannot greater than “Pno”(No. of Program step).

Decimal point use for control the event output from AL1 and AL2. (Modular), Note, if parameter AOP was assigned alarm action will trigger from AL1 and AL2, the event output also will cause alarm from AL1 and AL2.

When set

-XXX.1, AL1 activate, AL2 release

- XXX.2, AL1 release, AL2 activate
- XXX.3, AL1 and AL2 activate
- XXX.4, AL1 and AL2 release

Example:

Example 1 : t -5 = -1.1 ; means when the program arrived step 5, AL1 activate, AL2 release and will jump to step 1 continues running

Example 2 : t-6 = -0.3 ; means when the program arrived step 6, AL1 and AL2 activate and continuous next step.

Note: The program will be held if it jump from a control segment to another control segment (an Hold action will be inserted between two control sections), external run/Hold operation is needed to release the Hold status. It is not allowed that the jump section jump to itself (for example: t -6= -6), otherwise, the Hold status cannot be released.

4.2.4 Set Point Setting



The range of Set Point can be bounded by SPL and SPH which is +999~+3200℃. It represents the temperature to be controlled (℃) or a linear unit.

4.2.5 Program arrangement of multi-curve operation




The AI series program-type instruments feature flexible and advanced program arrangement methods. For users who have compiled multiple temperature control curves, different curves can be executed separately by first using StEP to jump to the starting segment and then running the program. For example, if a user has 3 curves each consisting of 3 segments, the programs can be arranged in segments 2~4, 5~7, and 8~10. To execute different curves respectively after startup, it is only necessary to set StEP to the starting segment of the curve to be run before each startup.

5 FAQs

5.1 How to set self-tuning?

When the process value PV is room temperature, set the set value SV to about 60% of the common temperature (for signals such as pressure or flow, it can be directly set to the common set value), then press  and hold it for two seconds to call up the parameter At, change the parameter value from OFF to ON and click  to start self-tuning. It can work normally after the self-tuning At symbol does not flash automatically.

5.2 How to enter the internal parameter list?

Press  and hold it for two seconds to enter the parameter list, then short press  to refer to the next parameter. If the parameters are locked, visit the password lock parameter Loc, and set it=808, then short press  to refer to all the parameters.



5.3 How to judge whether the instrument has output?

First, check whether the OP1 indicator light is on. If it is not on, then confirm whether the instrument is running if it is not on, next check whether the parameters are set correctly; if it is on, it means that the output status of the instrument is normal. Thus the multi-meter can be used to detect whether the output terminal signal is normal. If the output signal is normal but the rear actuator does not work, it is necessary to check other equipment or line faults along the output line. If there is no output signal, it can be judged that the instrument output module is abnormal.

5.4 Panel Flashes orAL?

This means that there is no input signal being detected. First, check whether the sensor specification corresponds to the input specification of parameter InP, then check whether the wiring of the input terminal is correct. If there is no problem, regardless of whether the incoming signal from the measuring sensor is correct, the sensor may be damaged.

5.5 How to enter the segment settings?

After the instrument is powered on, click  on the initial display interface to enter the program segment menu, then click  to display the next data. Each program is arranged in the order of "given value-time-given value". The segment setting is described in detail in the program control chapter of the manual.

5.6 How to set alarm parameters?

First, set the alarm parameter to the required value (for example: if the upper limit alarm is set to be 200°C, change the HIAL parameter to 200), then enter the internal parameters to find the parameter AOP to define the alarm signal output terminal (for example: if the upper limit alarm needs to be output from AL1, set the single digit of AOP to 1. For specific definition, please refer to the introduction of AOP parameters in the manual).

5.7 How to set bidirectional output for heating and cooling?

Enter the internal parameter list to find the parameter OPL(output lower limit), change OPL to -1%~-110%, the instrument becomes a bidirectional PID output system, the main output OUTP is used to control heating while the auxiliary output AUX is used to control cooling.



关注公众号 获取技术支持